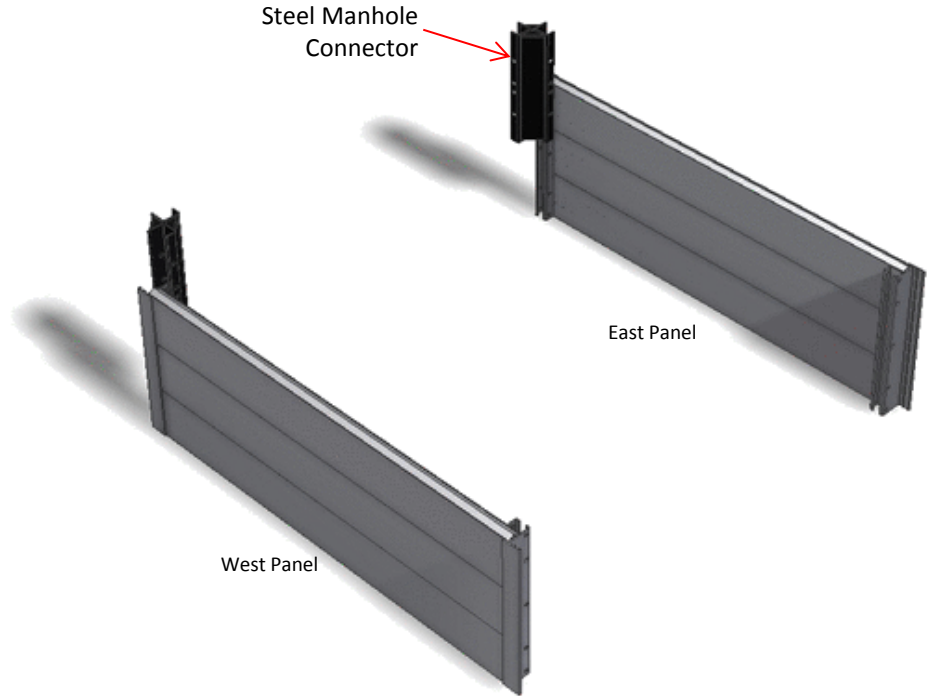


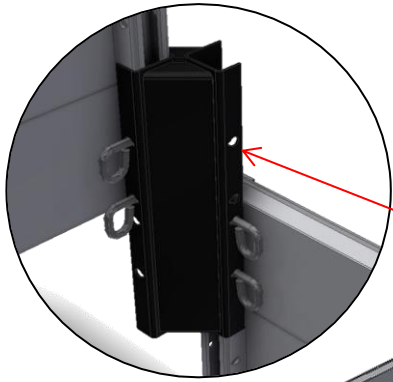
Step-1

On a flat work surface, place the east and west panels at the approximate desired width.

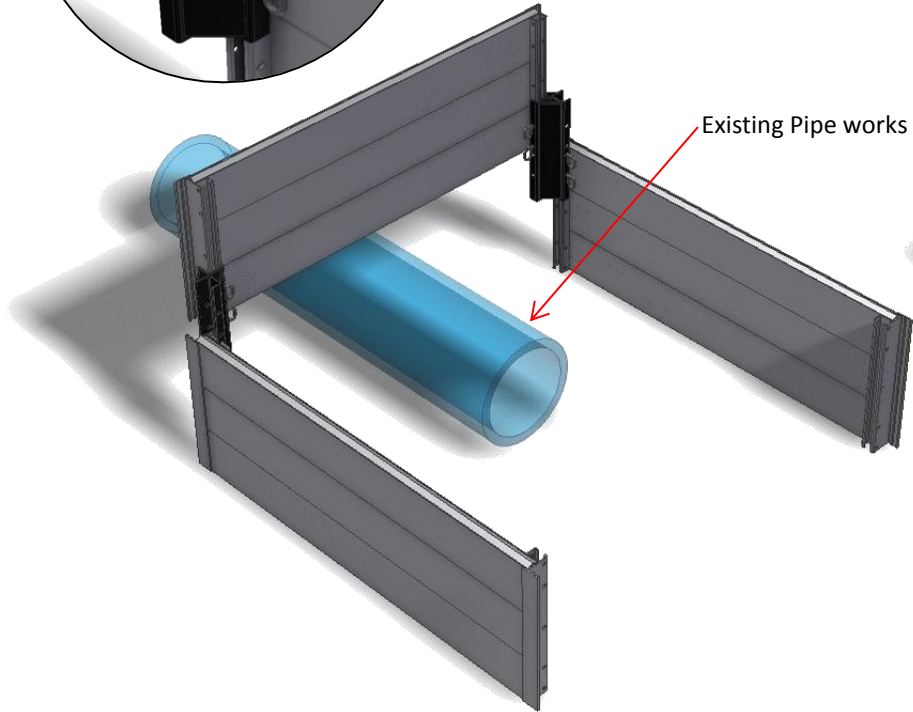


Step-2

Install the steel manhole connectors on the north end of the panels and secure them using the exclusive GME locking pins (note that the pins require no keepers)



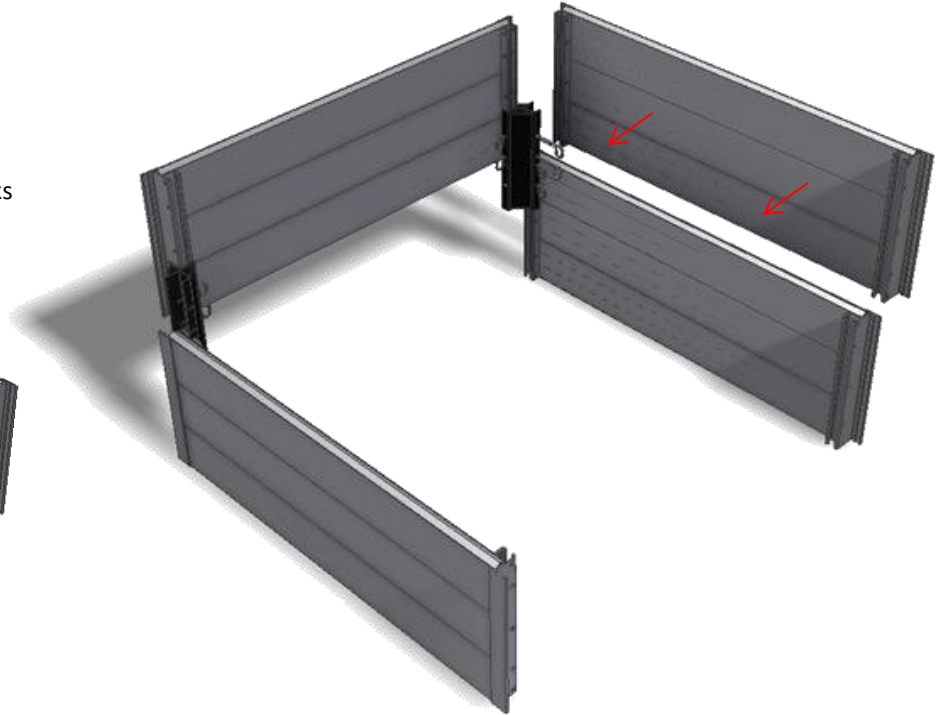
Manhole connector



Existing Pipe works

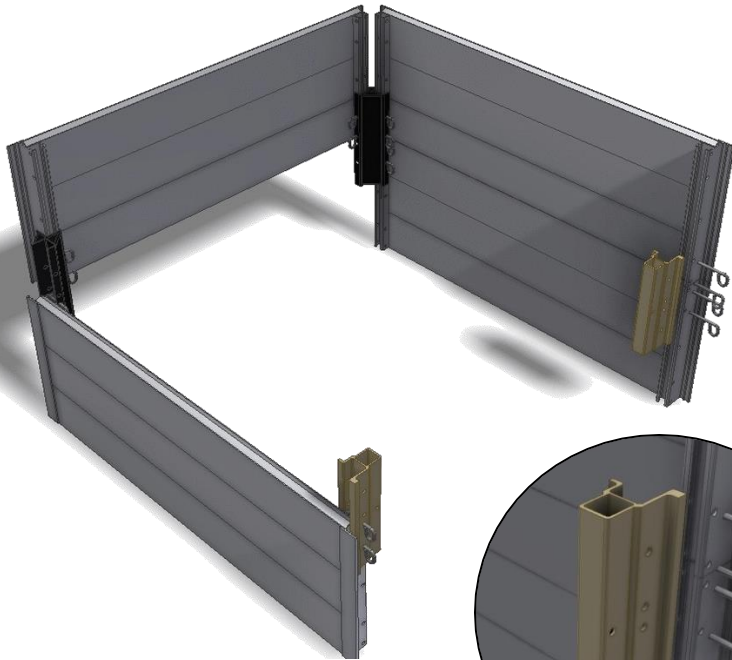
Step-3

With the manhole connectors in place, install the north (end panel)
Note that the panel can be installed 2 feet off the bottom allowing the
System to straddle existing pipe works.

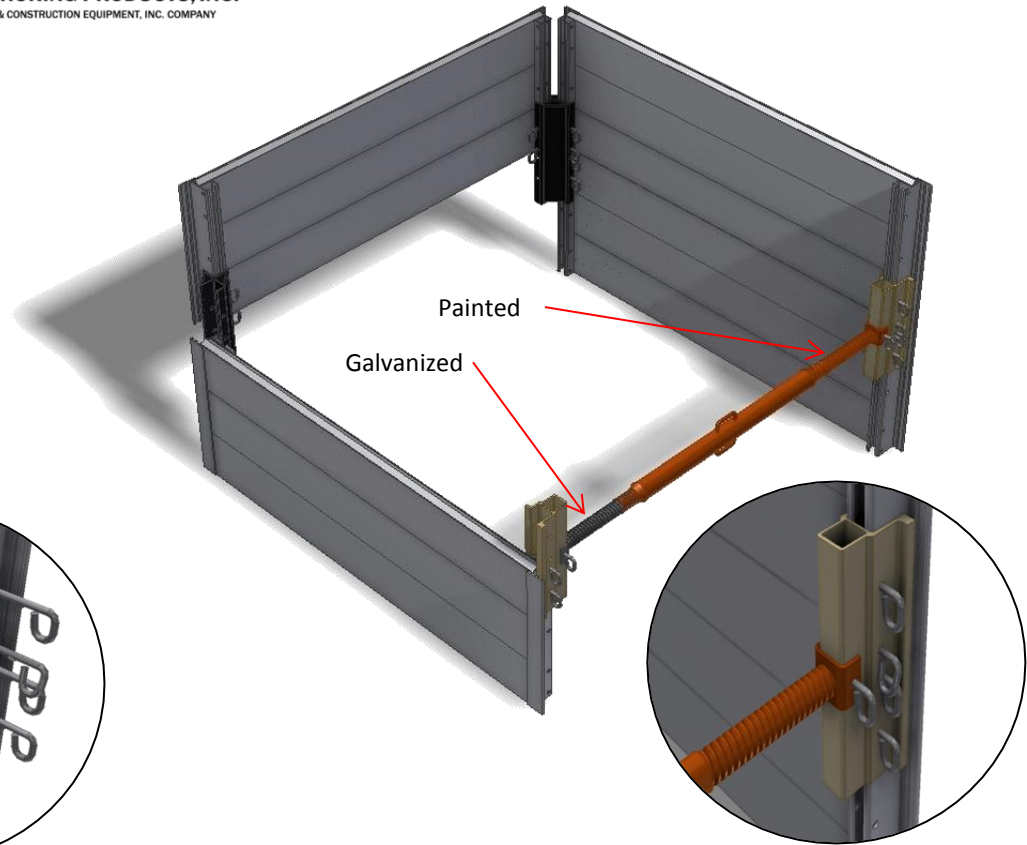


Step-4

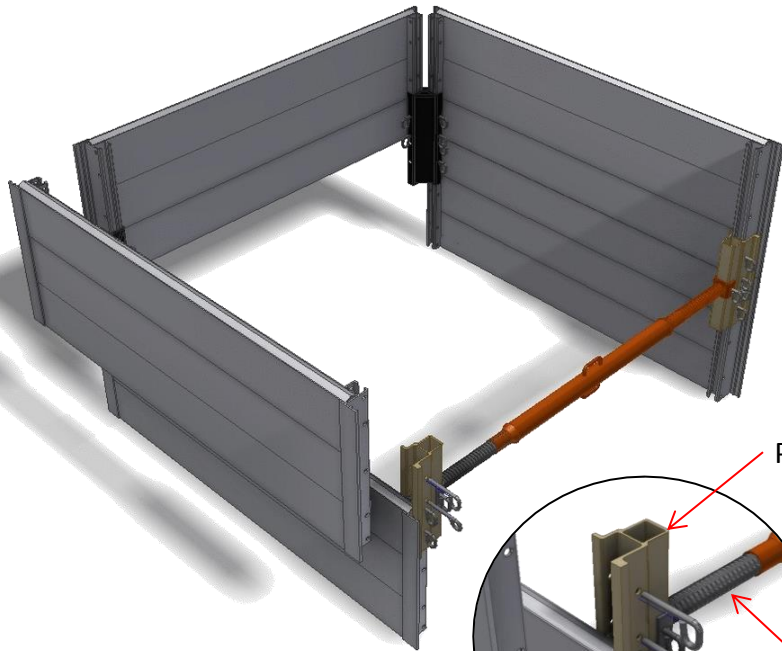
Install the next east or west panels.
Note that the panels may be
Installed by “walking” the panels into place.
Eliminating the need to guide the
panel thru a taller corner connector.



Step-5
On the south end, install 2 panel connectors
(1 on each east and west panels.)

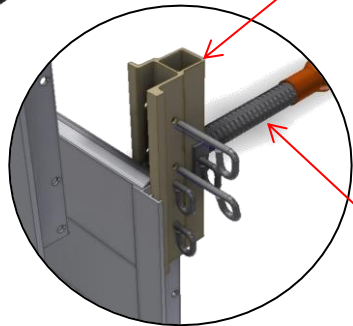


Step-6
With the panel connectors in place,
install the appropriate LSS model strut
(Note that the each strut comes with one
galvanized end and one painted end.)
Make sure to match up ends when using
Multiple struts. The paint code is an indication
of direction the strut will adjust.



Step-7

On the south end, install 2 panel connectors
 (1 on each east and west panels.)



PC2 Connector

24LSS Strut

Manhole Connector



Step-8

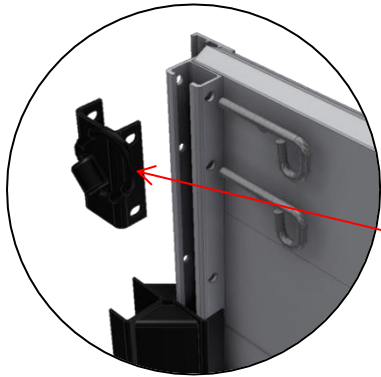
With the panel connectors in place, install the appropriate LSS model strut
 Note that the each strut comes with one unpainted galvanized end and one painted.
 Make sure to match up ends when using Multiple struts. The paint code is an indication of direction the strut will adjust.



Step-9
On the south end, install 2 panel connectors
(1 on each east and west panels.)



Step-10
With the panel connectors in place, install
the appropriate LSS model strut
Note that the each strut comes with one
unpainted galvanized end and one painted.
Make sure to match up ends when using
Multiple struts. The paint code is an indication
of direction the strut will adjust.

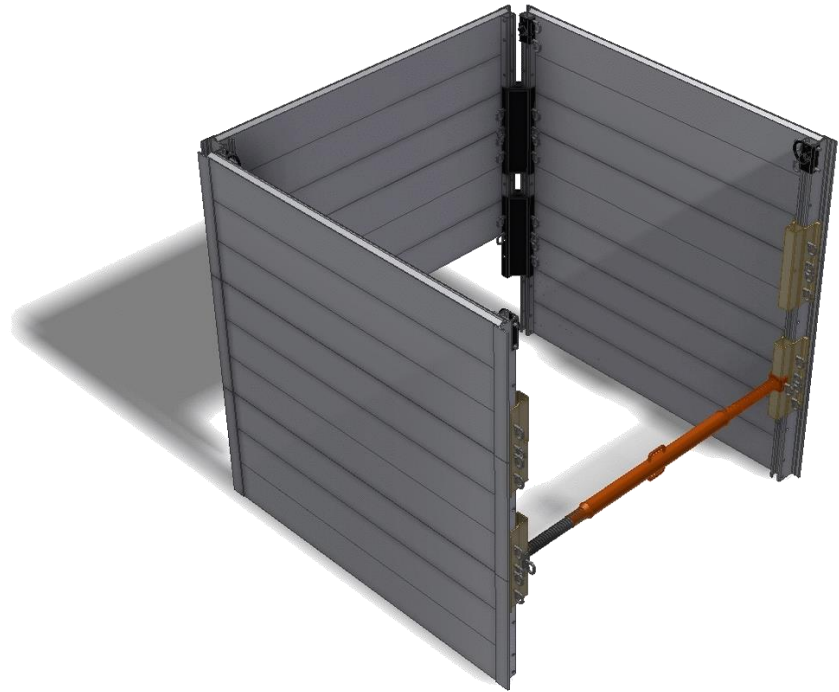


24LSP Lift eye assembly



Step-11

Install the 24LSP lift eyes to the top of the upper most 24LSP panels.
Secure Using the 24LSP locking pins.



Step-12

Once all 4 lifting eye assemblies have been secured, install the last panel
On the north end and secure to the manhole connector with the 24LSP locking pins.

24LSP MODULAR PANEL ASSEMBLY



Step-13

Install the last strut at the south end by secure it to both the east and west panel

Connectors using the 24LSP locking pin. Make sure that the strut is installed with the same

Painted or unpainted ends matching with all previously installed struts.